

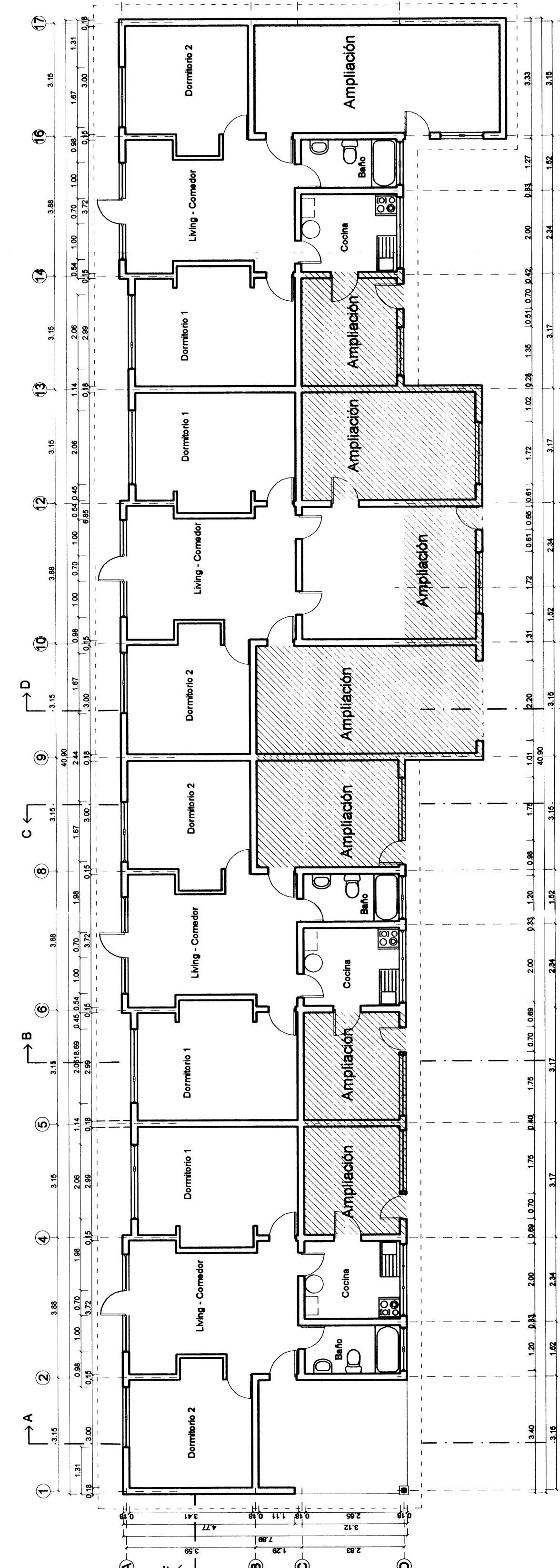
TIPOLOGIA AMARILLA - CALLE 2 - EXISTENTE

The drawing shows a long elevation of a residential block along Calle 2. It is divided into three main sections labeled A, B, and C. Section A (left) shows houses 83, 84, 85, 86, 87, and 88. Section B (middle) shows houses 89 and 90. Section C (right) shows houses 91, 92, 93, 94, 95, 96, 97, 98, and 99. The drawing uses different hatching patterns to distinguish between existing facades (diagonal lines), proposed facades (cross-hatching), and an extension (horizontal lines). A legend box in the upper right corner, titled 'SIMBOLOGIA', defines these patterns: 'Actual' (diagonal lines) and 'Ampliación' (horizontal lines). A note at the top center states: 'NOTA: LOS COLORES EN LAS FACHADAS DE LAS AMPLIACIONES CORRESPONDEN A LOS COLORES ACTUALES.' (Note: The colors in the facades of the extensions correspond to the current colors). The drawing is titled 'TIPOLOGIA CALLE 2' and 'FACHADA (ACTUAL) ACCESO 1/1000'.

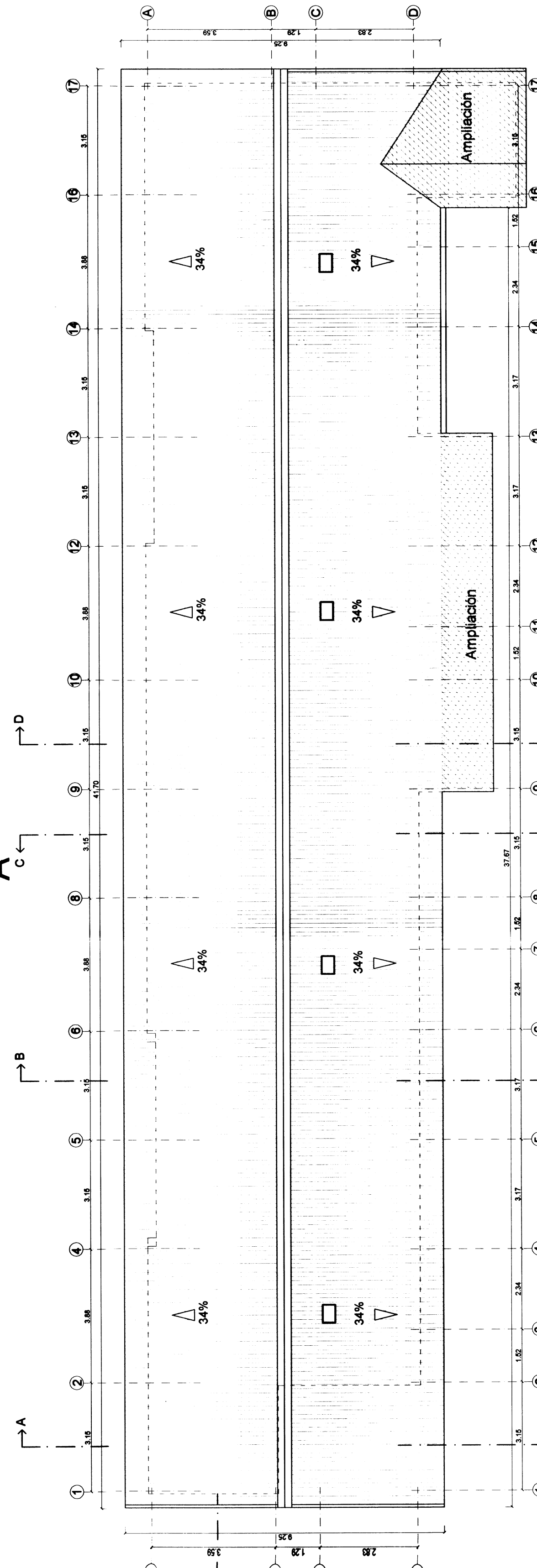
CASA N° 90 : CA

CASA N° 88 : CASA N° 87

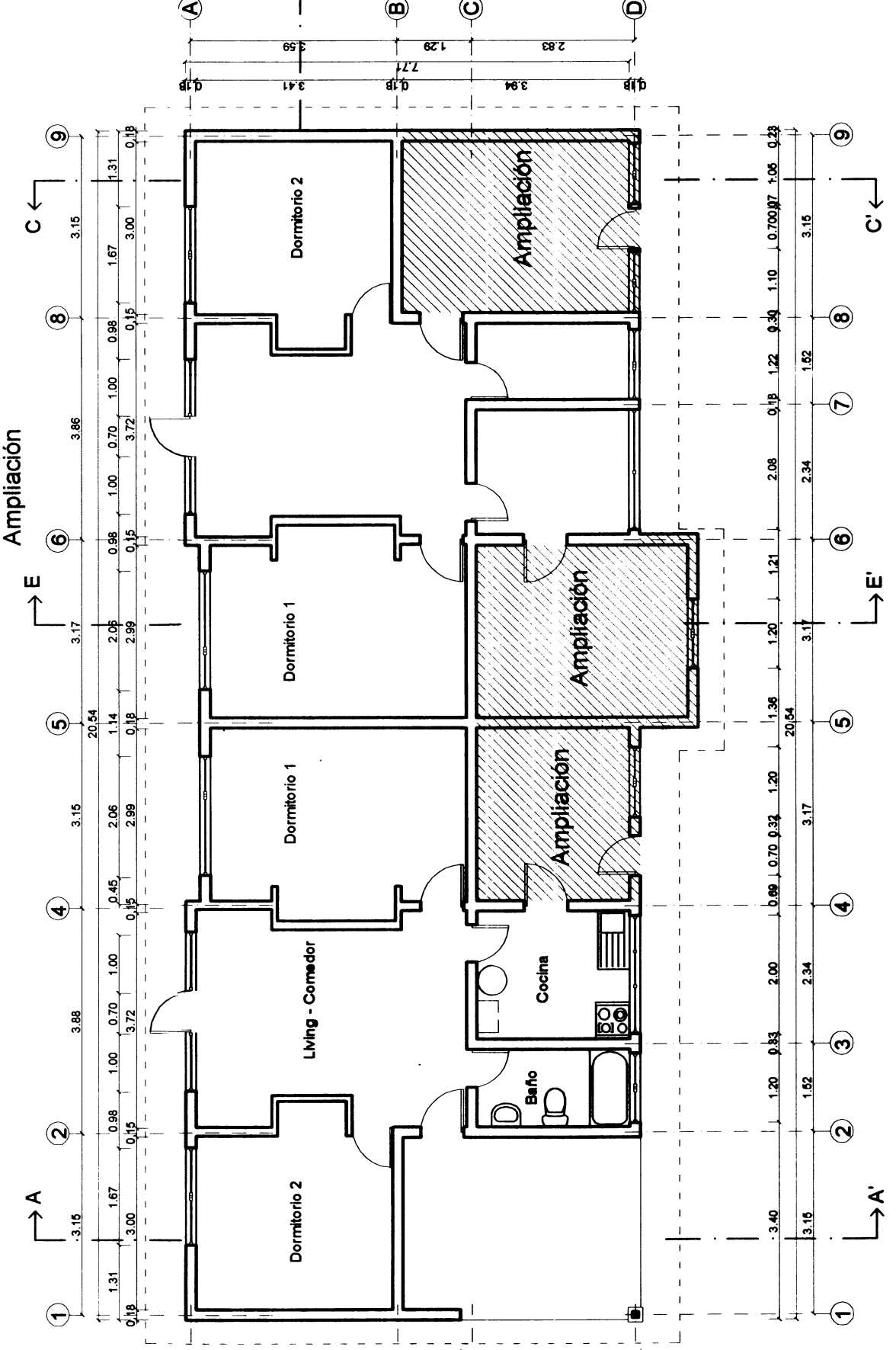
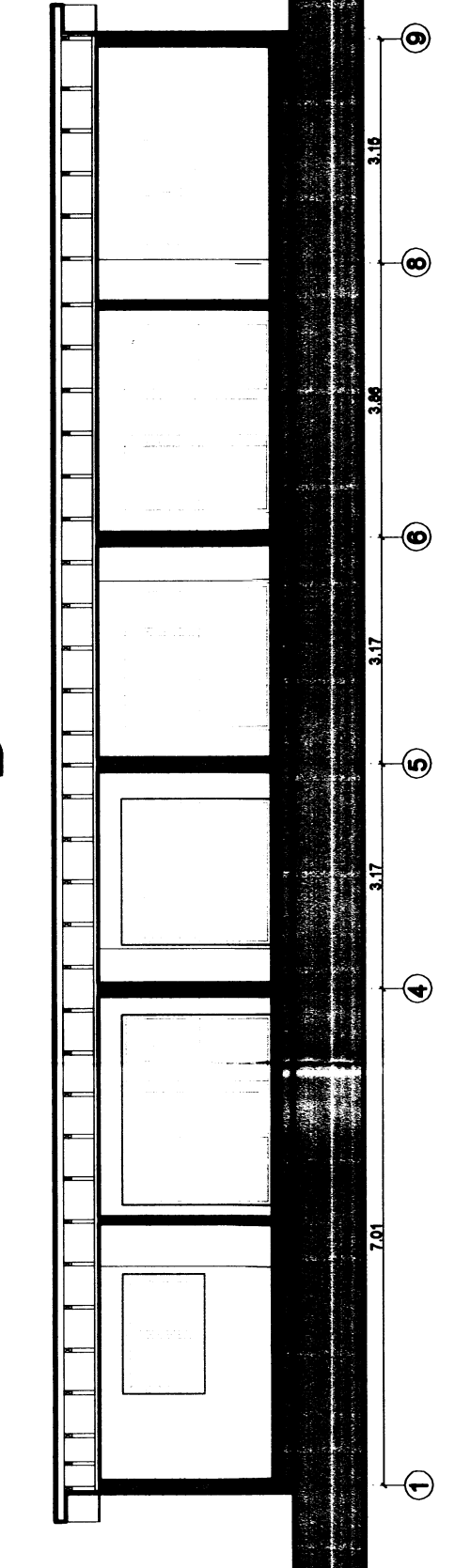
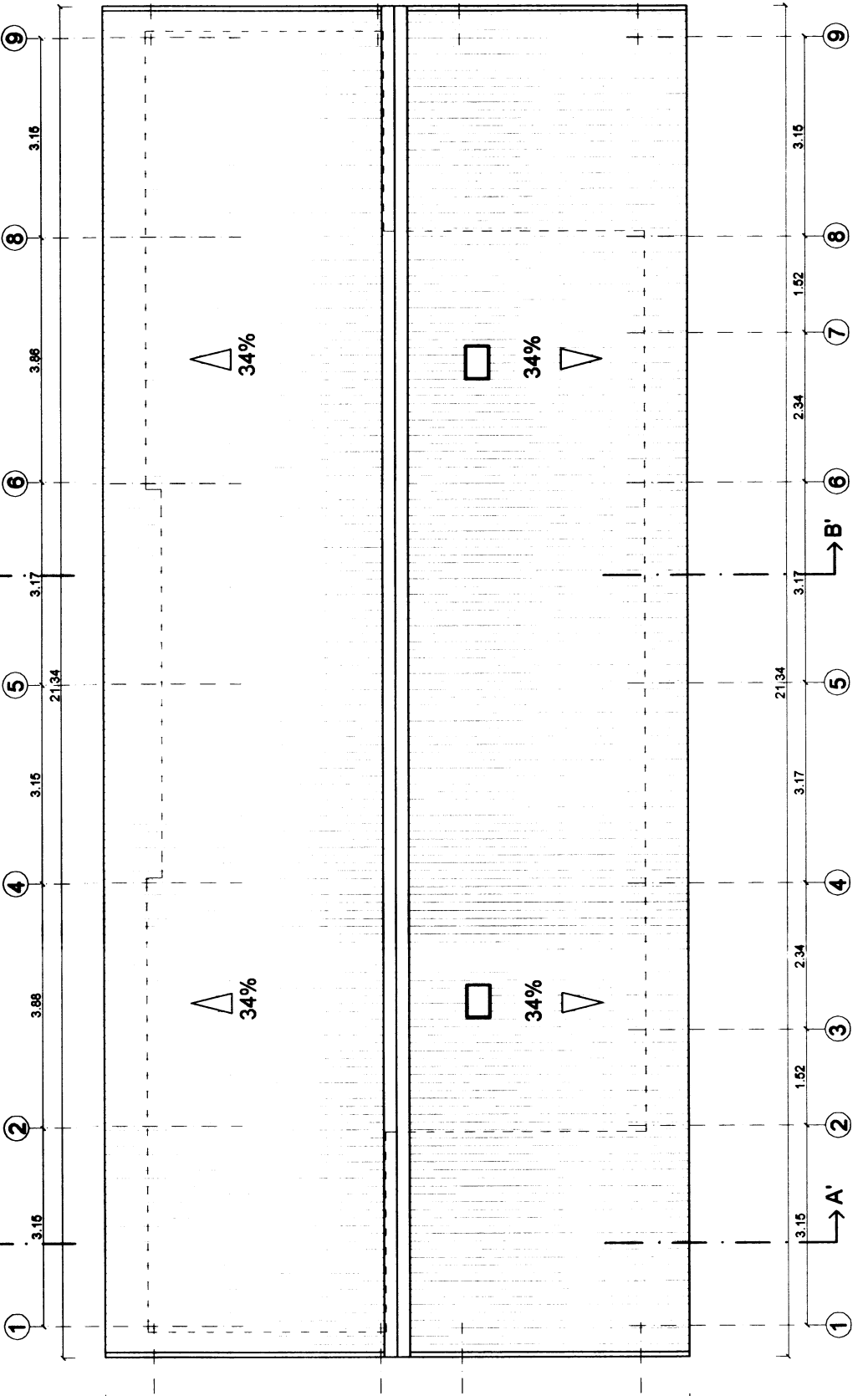
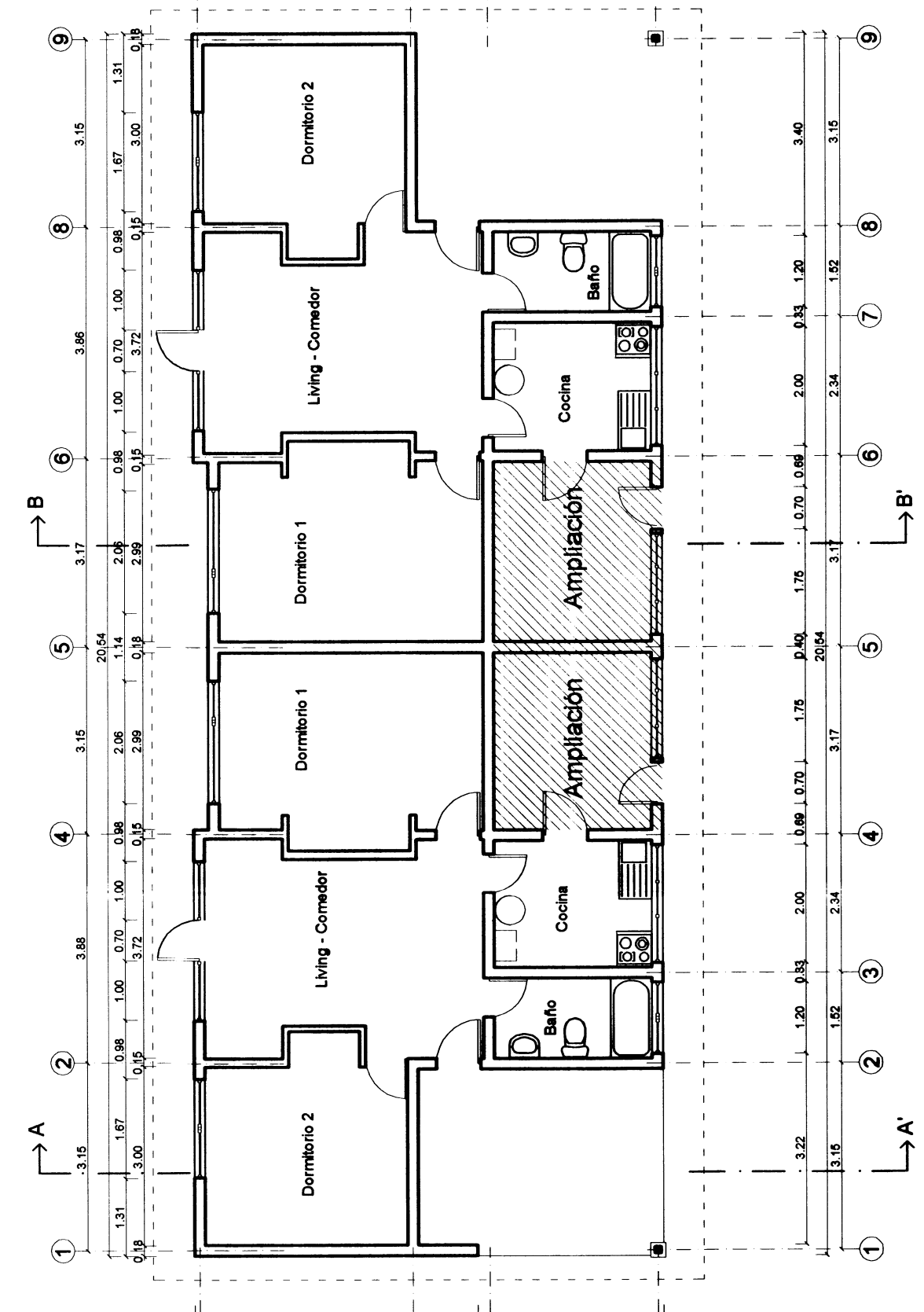
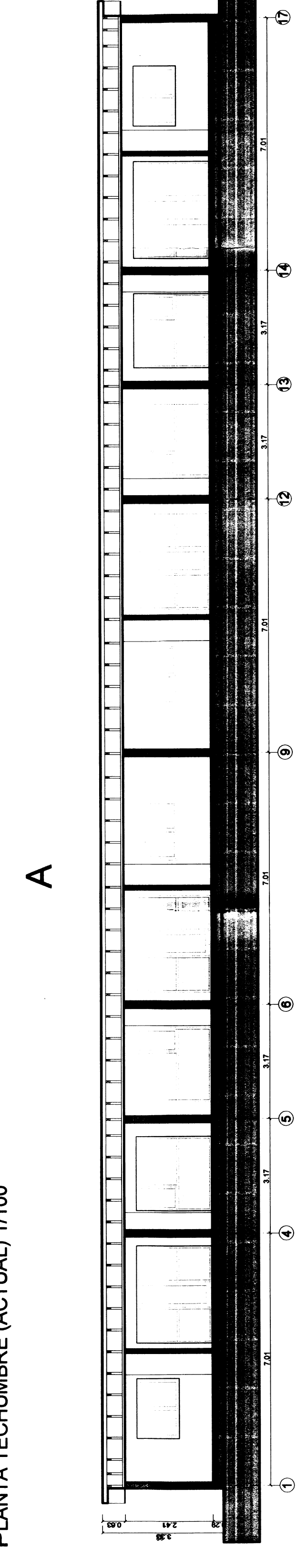
TIPOLOGIA CALLE 2
EACHADA (ACTUAL) PATIO 1/100



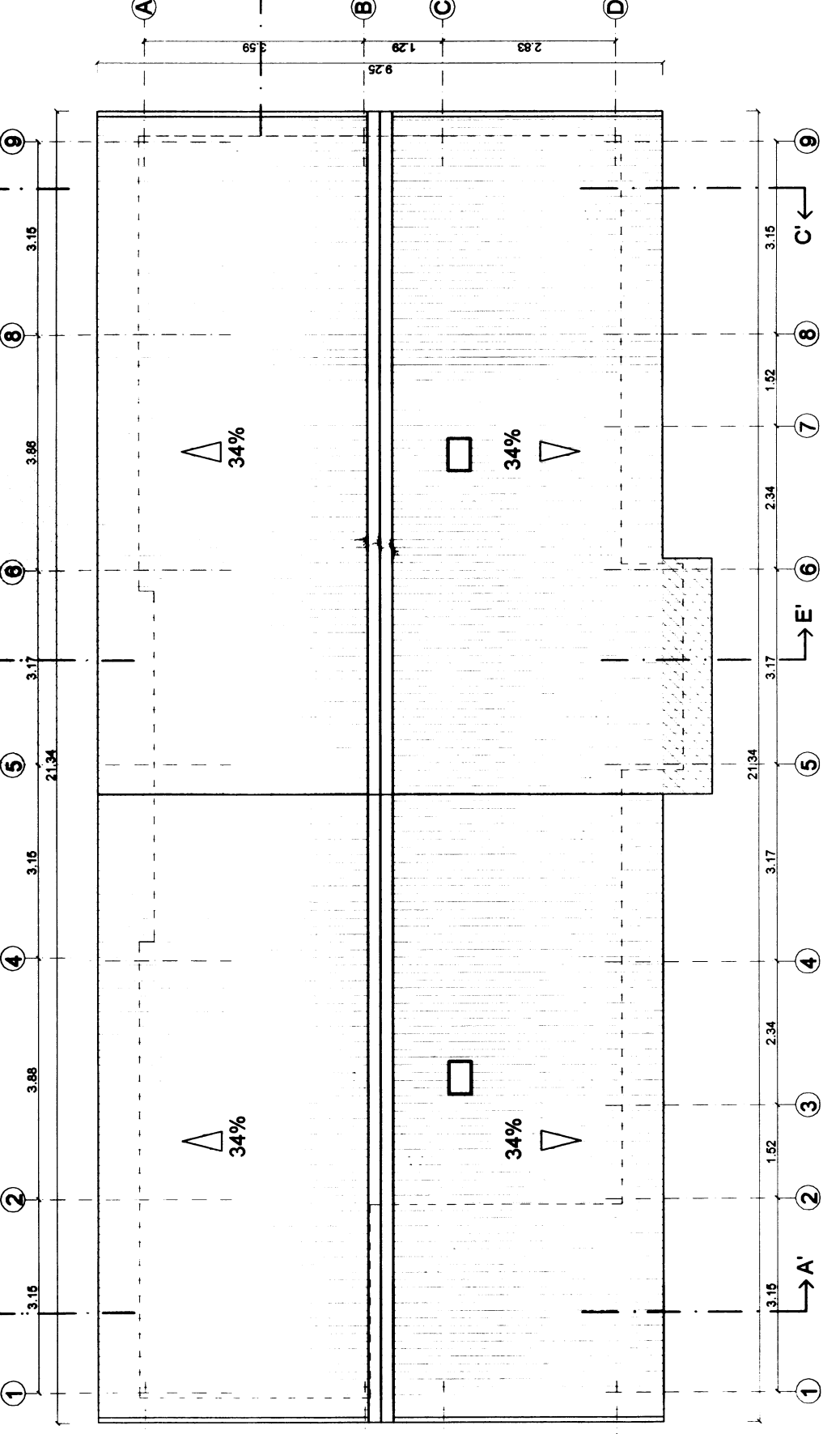
PLANTA PRIMER NIVEL (ACTUAL) 1/100



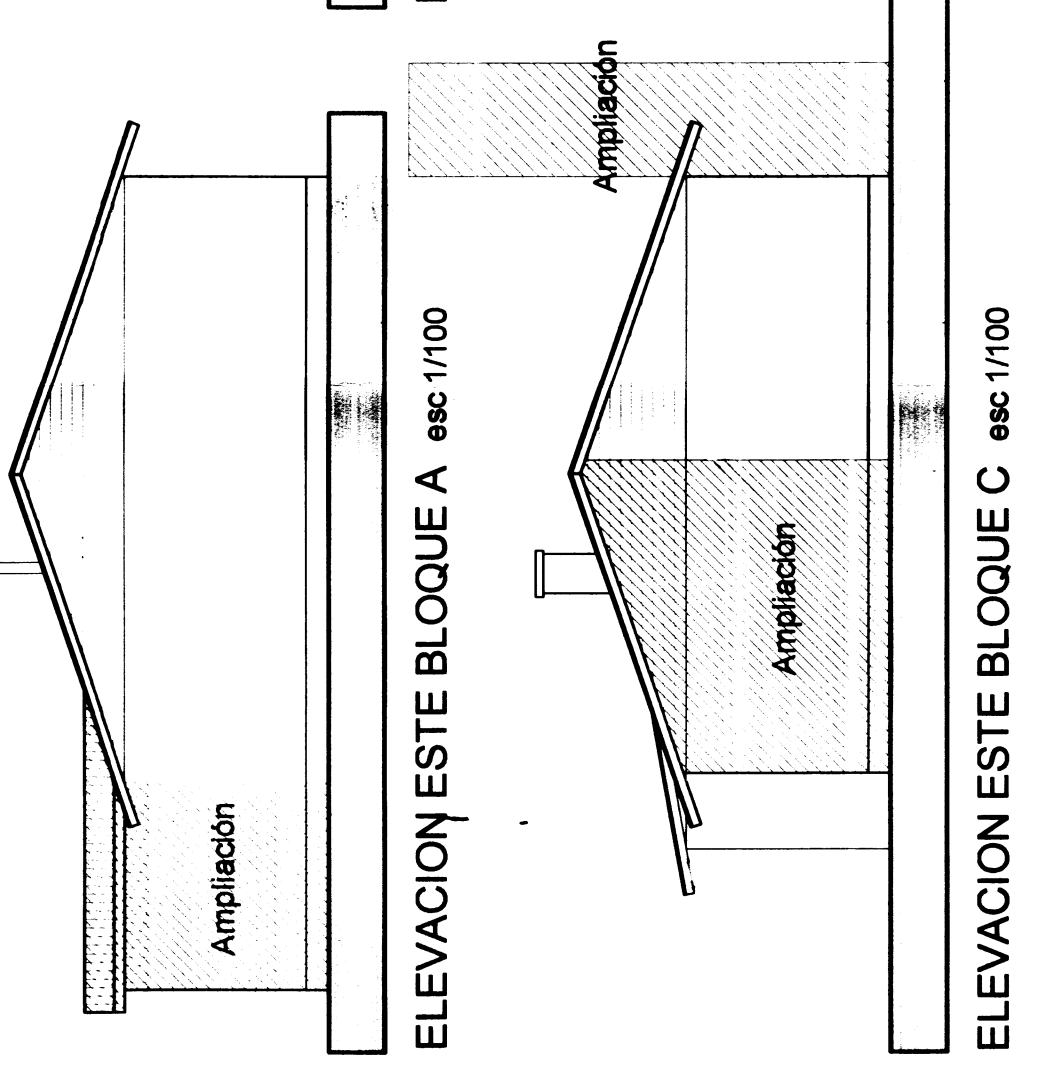
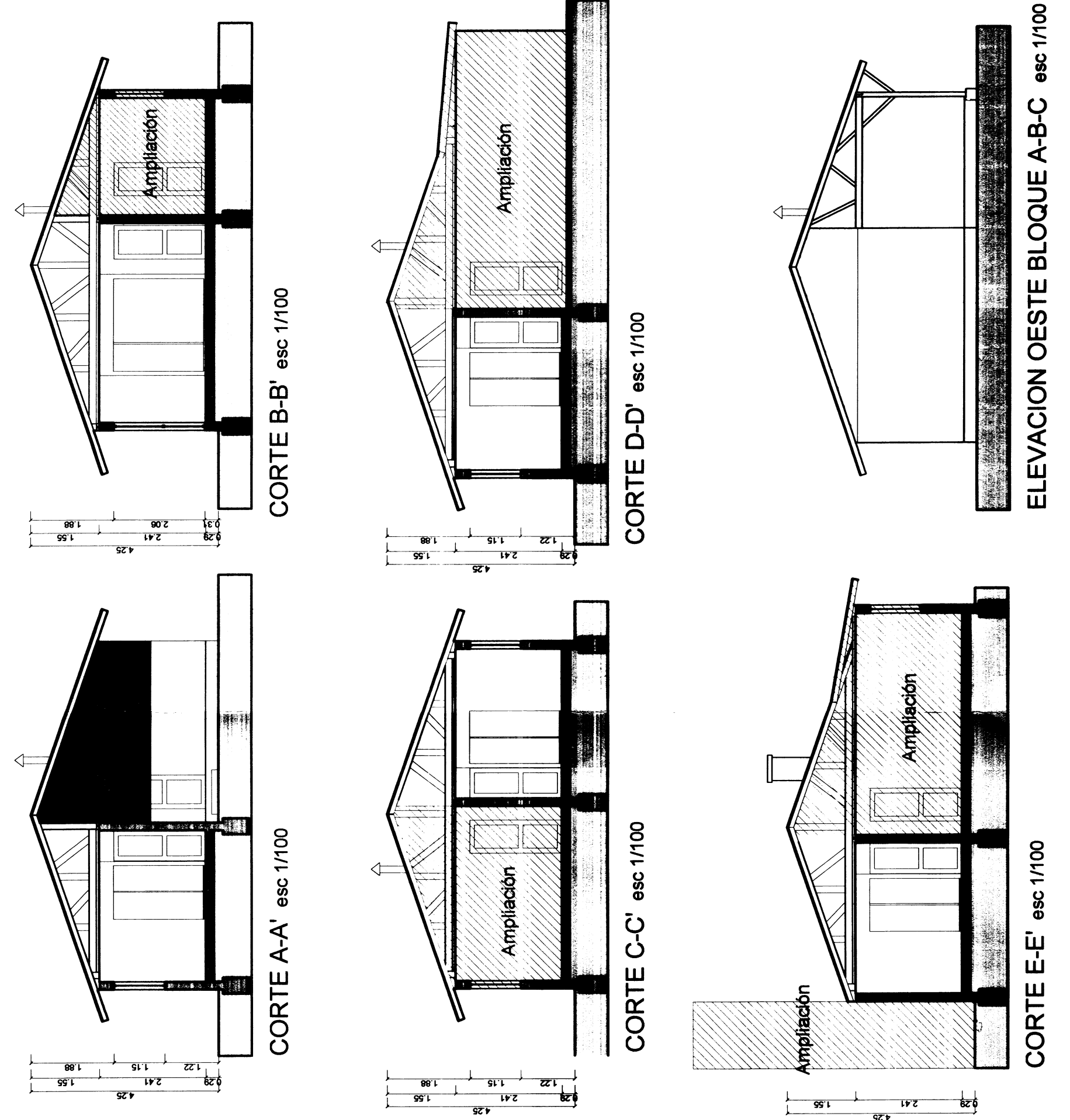
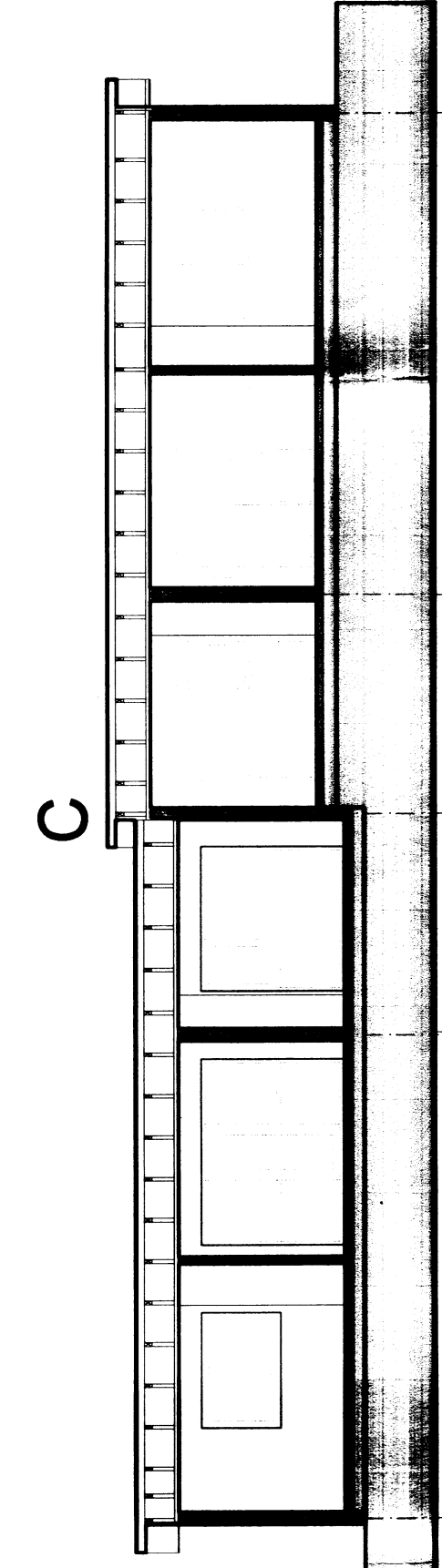
TIPOLOGIA CALLE 2



- iación



CORTE F-F' (ACTUAL) 1/100



Cuadro de Superficies			
Nº	Vivienda original	Ampliación	Total
83	65,54	8,97	74,51
84	65,54	21,94	87,48
85	65,54	43,30	108,84
86	65,54	32,00	97,54
87	65,54	8,97	74,51
88	65,54	8,97	74,51
89	65,54	8,97	74,51
90	65,54	19,87	85,51

